



AECOM
2090 Palm Beach Lakes Blvd
Suite 600
West Palm Beach, FL 33409
www.aecom.com

561 684 3375 tel
561 689 8531 fax

Mr. Jason Pierman
Special District Services, Inc.
The Oaks Center
2501A Burns Road
Palm Beach Gardens, FL 33410

August 27, 2015
60309393

Subject: Winston Trails East Community Development District – Annual Inspection Report

Dear Mr. Pierman,

AECOM performed a visual inspection of the facilities owned by the Winston Trails East Community Development District (WTECDD) on May 29, 2015. Overall the surface water management system was found to be in good condition. The inspection did not include extraordinary methods such as dewatering, photographic means, etc. due to the expense, and satisfactory appearance and operation of the system.

Based on visual inspection and as shown on the attached photographs, no WTECDD owned facilities are in immediate need of repair or replacement. However, it is recommended that additional maintenance or actions be performed in the following areas:

1. Stabilization of lake bank erosion – As reported in last year's report, it is apparent that a majority of the lake's banks have experienced erosion, leaving some with drop offs of over 2 feet. We observed erosion control measures currently being installed on Lake 3 (see Figures 6-9, 11).
2. Implement a quarterly maintenance schedule for the storm water control structures and vegetation control around culvert connections within all lakes.
3. If the inlets throughout the development have never been cleaned out, it is recommended that WTECDD contract with a company to clean out accumulated sediments. This could be done a rotating basis. The inlets were clear of trash.

If you have any questions regarding this report, please feel free to call me.

Sincerely,

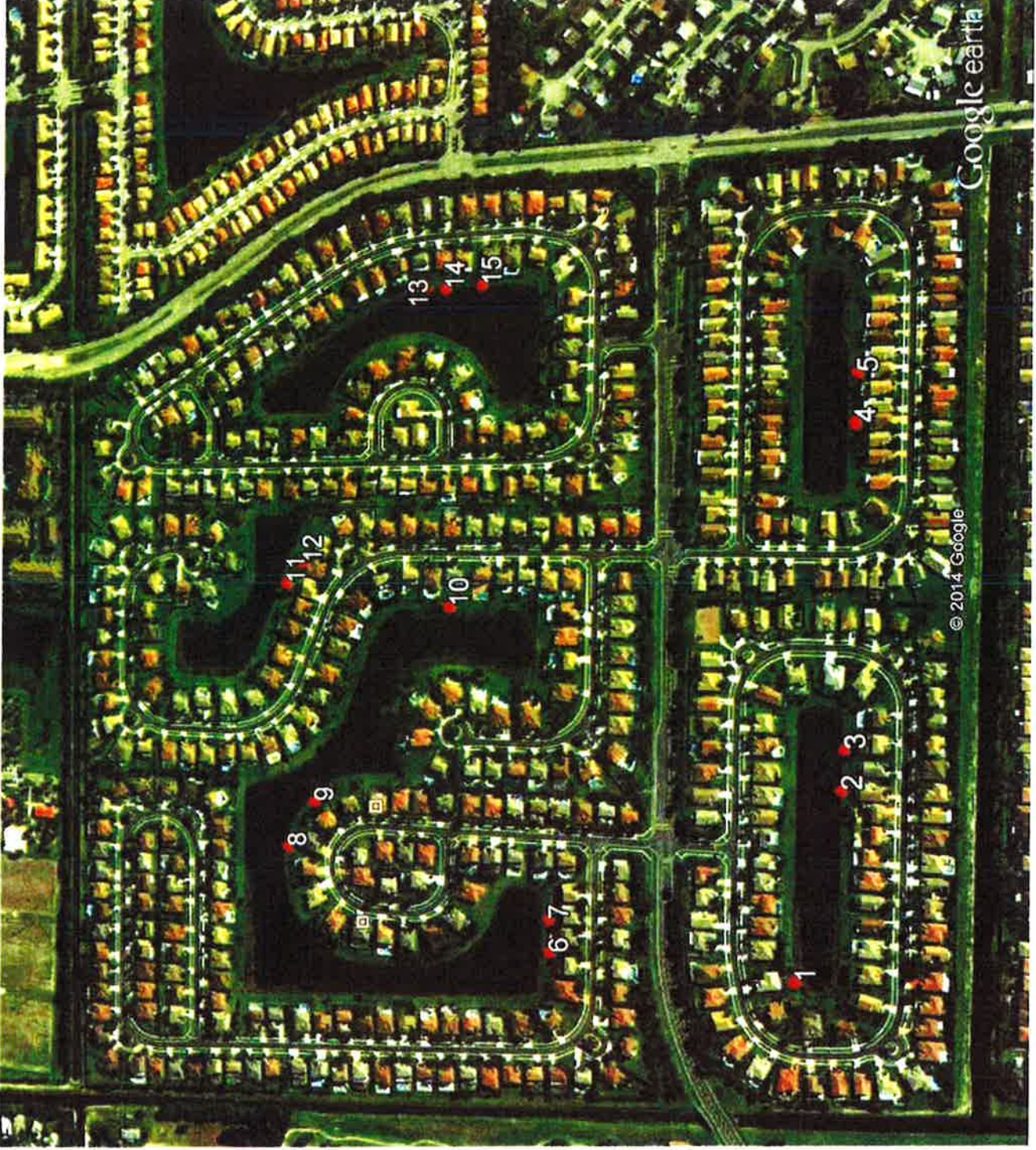
AECOM

Karen D. Brandon, P. E.
District Engineer

Karen D. Brandon, P.E.
No. 38579

AUG 27 2015

AECOM Technical Services, Inc.
No. 8115



Google earth

feet
meters

2000

700



Winston Trails East Annual Stormwater Management System Inspection – 05/29/15



Figure 1 – West End of Lake 1 Looking South on 05/29/15



Figure 2 – South End of Lake 1 Looking West on 05/29/2015



Figure 3 – South End of Lake 2 Looking West on 05/29/2015



Figure 4 – South End of Lake 2 Looking West on 05/29/2015



Figure 5 – South End of Lake 3 West of Shadow Creek Village Circle Looking West on 05/29/2015



Figure 6 – South End of Lake 3 West of Shadow Creek Village Circle Looking East on 05/29/2015 - Erosion Protection has been completed.



Figure 7 – South End of Lake 3 North of Shadow Creek Village Circle Looking Northeast on 05/29/2015 – Erosion Protection has been completed.



Figure 8 – South End of Lake 3 North of Shadow Creek Village Circle Looking Southeast on 05/29/2015 – Erosion protection has been completed.



Figure 9 – East End of Lake 3 East of Indianwood Village Lane Looking West on 05/29/2015 – Erosion protection installation on opposite bank ongoing.



Figure 10 – South End of Lake 3 Looking West on 05/29/2015 – Littoral Zone



Figure 11 – South End of Lake 3 Looking East on 05/29/2015 – Erosion protection in process of being installed.



Figure 12 – East End of Lake 4 Looking Northwest on 05/29/2015



Figure 13 – East End of Lake 5 Looking North on 05/29/2015



Figure 14 – East End of Lake 5 Looking North on 05/29/2015



Figure 15 – East End of Lake 5 Looking South on 05/29/2015